



MURRAY
ENGINEERING



AN AUSTRALIAN MINING SERVICES PROVIDER
WITH A GLOBAL FOOTPRINT



MURRAY ENGINEERING

HARD-LINE LP401

LOW PROFILE LOADER



**GOT QUESTIONS?
LET'S TALK!**

**PH: 1800 MURRAY
OR 08 6459 7800**



NO FEAR.

UNMANNED. REMOTE CONTROLLED. LOW PROFILE. LIFTS A TONNE.

The LP401 is a remote control operated low profile loader (skid steer) that can be used in a variety of restrictive areas where a normal personnel-operated machine cannot operate, or where humans should not go. It is remote controlled, 1016mm high, and has a lift capacity of 1000kgs with the counterweight kit installed.

It provides a safe and easy way to collect or move ore and clean. The machine has been developed following mine requirements and user needs, and is compatible with teleop and all teleop upgrades.

Applications include: culvert cleaning, conveyor cleaning, military missions, building defensive berms, pushing blasted ore, removal of spillage, removal of materials, cleaning slopes after blasting, mucking operations in thinly bedded deposits, pushing ore, and carrying ore.

The LP401 also has a variety of available attachments and options to suit any application, from over the tyre tracks to a strobe light kit and tow package kit. All attachments are compatible with third party skid steer attachments.

With infinitely variable tandem hydrostatic piston pumps driving two fully reversing hydrostatic motors, the LP401 has the power to get the job done.



FEATURES AND BENEFITS

- Fully remote controlled operation
- Low profile for restrictive areas
- Perfect for hazardous areas
- Extremely flexible for use of operation
- Can be used with any standard skid steer attachment
- Can be operated by radio remote (operator line of sight)
- Can be operated by radio remote with video option (extended line of sight with camera)
- Can be operated by tele-remote (camera operated, beyond operator line of sight)



DON'T SETTLE FOR INFERIOR

Other profile skid steer loaders are not designed for the rugged conditions of mines and industrial sites. The LP401 is robust and more versatile with its range of attachments. It also has a lower profile to fit into those spaces where other machines cannot.



SPECIFICATIONS

RADIO REMOTE CONTROL

Loader steering, hydraulics (lift and tilt), and auxiliary	Controlled by RRC slave unit joysticks
Park brake	Controlled by RRC slave unit switch
Service brake	Two independent hydrostatic systems controlled by RRC slave unit joysticks

PERFORMANCE RATINGS

Lifting capacity	907 Kg (2000 lbs)*
Rollover angle (stock tires)	Maximum angle = 35.75° **
Rollover angle (tracks)	Maximum Angle = 46.75° **
Breakout force/lift	1254 Kg (2765lbs.)
Breakout force/tilt	1259 Kg (2776lbs.)
Max travel speed (low range)	0 -10.5 km/h (0 - 6.5 mph)
Max travel speed (high range)	0-14.8 km/h (0-9.2 mph)

ENGINE

Make	Bobcat/Doosan Engine
Model	1.8L Engine Tier 4 (D18NAP)
Fuel	Diesel
Cooling	Liquid
Horsepower:	
ISO 9249 EEC / SAE J1349 Net	35.0 kW (47.0 hp) @ 2800 rpm
ISO 14396 Gross	36.6 kW (49.0 hp) @ 2800 rpm
SAE J1995 Gross	37.1 kW (49.8 hp) @ 2800 rpm
Torque:	
ISO 9249 EEC / SAE J1349 Net	154.0 N•m (113.6 ft-lb) @ 1800 rpm
SAE J1995 gross	165.0 N•m (121.7 ft-lb) @ 1800
Low idle	1125-1175 rpm
High idle	2800 rpm
Number of cylinders	3
Displacement	1794 cm³ (109.5 in³)
Bore/stroke	90 mm / 94 mm (3.54 in/ 3.70 in)
Fuel Tank Capacity	54.5 L (14.4 U.S. gal)

DRIVE SYSTEM

Transmission	Infinitely variable tandem hydrostatic piston pumps which drive two fully reversing hydrostatic motors
--------------	--------------------------------------------------------------------------------------------------------

WEIGHT

Operating weight	2316.95 kg (5108 lbs)
Shipping weight (no fuel)	2274 kg (5013.8 lbs)

HEIGHT

Regular (Stock) Tires	42.625" (1083mm)
Solid Tires	40.0" (1016 mm)
Tracks	43.25" (1099 mm)

STANDARD FEATURES

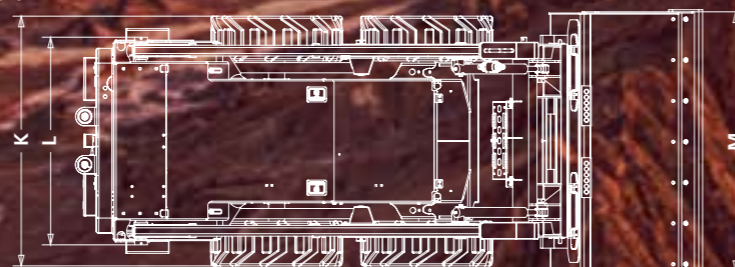
Automatically Activated glow plugs
10x16.5, 10 Ply, Heavy Duty Tires
Auxiliary Hydraulic: With Variable Flow/Maximum flow Electronically Activated Proportional Front Auxiliary Engine/Hydraulics System Shut Off
Bucket Quick Connect
Bucket adapter kit
Tow package kit
Parking brake
Spark arrester exhaust system
Strobe light kit
Radio remote control (RRC) master and slave units
Standard 62" (1574.8mm) bucket
Lifting apparatus

OPTIONS

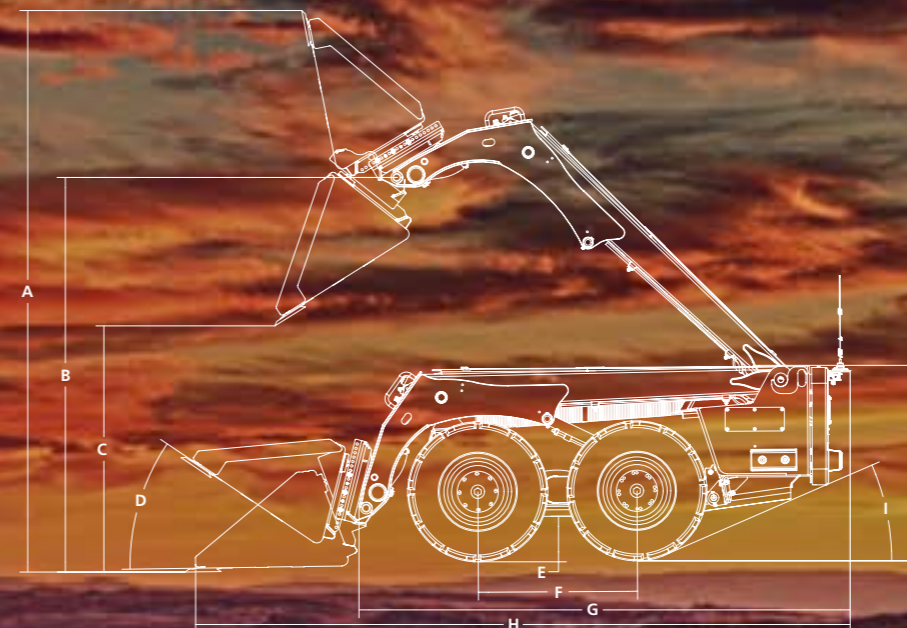
Solid tires
Over the tire track assembly
Additional strobe lights
Rear facing camera
Additional counter kit
Custom decal and paint
Led bulbs on the front and back light
Dry cell battery
Slave carrying case
Yagi long-range antenna

ATTACHMENTS

Compatible with third party skid steer attachments



*Lifting Capacity is based on the installation of an additional counter weight Kit.
**Rollover angles have been tested with an empty level bucket.



VARIABLE	DIMENSION
A	120.000" (3048mm)
B	80.800" (2052mm)
C	43.500" (1105mm)
D	28.000" (711.2mm)
E	8.400" (213mm)
F	35.400" (899mm)
G	109.000" (2769mm)
H	146.000" (3708mm)
I	22.000" (558.8mm)
J	42.625" (1083mm)
K	58.600" (1488mm)
L	48.765" (1239mm)
M	62.000" (1575mm)



The world's most trusted remote control company.

WE BRING THE SKILLS

Murray Engineering is a world class service provider to the mining industry, and is headquartered at our modern, purpose-built 55,000m2 facility in Western Australia, with branches in Kalgoorlie, Newcastle, Roxby Downs and Mongolia.

Founded in 2007, the company has grown to a +\$120 million per annum revenue.

Murray Engineering prides itself on providing world class service, reflected in its growing list of clients, which includes leading companies from a range of industries throughout the world.

With seven divisions and hundreds of services, we've got you covered.

ACCREDITATIONS



Safety

Accreditation to ISO 45001



Quality Management Systems

Accreditation to ISO 9001



Environment

Accreditation to ISO 14001

Certifications

Steelwork Compliance Australia Certification, ECL008637, AU31857, AU45191, MRB10056

Training Facilities

Training Centre with Registered Training Organisation (RTO) Accreditation.

ELECTRICAL | MECHANICAL | FABRICATION | PUMPING

AUTOMATION & CONTROL SYSTEMS | PRODUCT & EQUIPMENT HIRE/SALES | LABOUR HIRE



ELECTRICAL ECL8637 | FABRICATION | PRODUCT & EQUIPMENT HIRE/SALES |

“ TESTIMONIALS

Murray Engineering has continually exceeded our expectations. They delivered the fleet of new vehicles and equipment well ahead of time with all vehicles meeting all our specifications and requirements. The efficiency of the mobilization was critical to the project restart and operational plans for the mine, and MEPL excelled in ensuring our objectives were met ahead of time and within budget.

- TIER 1 MINING COMPANY.

I would like to thank Shane & Dean for their efforts and assistance, the way they have controlled the job, followed direction and added valuable input into the process is a credit to them and to Murrays.

- TIER 1 MINING GROUP.

Rob , Paul and your team, I think I can speak for everyone in thanking you for dropping everything and assisting us with providing your people and equipment at a moments notice to get us back up and running.

- PRECIOUS METALS MINING COMPANY.

Id like to thank you for support and relay the great Job that Rob has done to date on site, pleased to report also he was nominated through our Vital Behaviours awards via work mates, which is extremely pleasing to see a contractor living our values whilst on site. Thanks again for continued support .

- MAJOR GOLD MINING GROUP.

Looking around the piping section it was good to see an enthusiastic team taking pride in their work. Please pass on to the team my congratulations on the quality of their workmanship.

- MAJOR ENVIRONMENTAL SERVICES GROUP.

Just wanted to let you know the wash down rig is performing well. Pass the word around, you and your team did some good work.

- MAJOR GOLD MINING GROUP.



LABOUR HIRE | PUMPING | AUTOMATION & CONTROL SYSTEMS | MECHANICAL



MURRAY
ENGINEERING



SCAN ME

READY TO
KNOW MORE?

HEAD OFFICE

54 Munday Avenue, Pinjarra WA 6208
Ph: 1800 MURRAY or 08 6459 7800

NEWCASTLE OFFICE BRANCH

431 Masonite Road, Heatherbrae NSW 2324
Ph: 02 4953 2200

KALGOORLIE OFFICE BRANCH

48 Kakarra Road, Kalgoorlie WA 6430
Ph: 08 6459 7610

MURRAY MINING SERVICES MONGOLIA

Unit 79, Partnership Street, Western Industrial area, 20th
Khoroo, Bayangol district, Ulaanbaatar, Mongolia
Ph: +976-9404 9016/ +976-9404 9006
info@murrays.mn

SEVEN DIVISIONS, HUNDREDS OF SERVICES -
WE'VE GOT YOU COVERED